

SEE IT. HEAR IT. LIVE IT.

Events at Tottenham Hotspur Stadium



**STADIUM
TOURS**

THE
DARE
SKYWALK

DRIVE
LONDON



WELCOME

INTRODUCTION

The multi-award-winning Tottenham Hotspur Stadium has set a new benchmark in global stadium design, offering inimitable experiences in a multitude of capacities – be that sports or events.

Boasting unlimited choice and flexibility, the Stadium is home to an array of stunning spaces that are ideal for any event. With an experienced team to help facilitate, all you need to do is sit back and relax as we create an unforgettable day for you and your guests.



**TOTTENHAM HOTSPUR STADIUM'S EVENTS
ARE THE BEST OF THE BEST!**



KAREN DUNDAS
HEAD OF HOSPITALITY AND FAN EXPERIENCE - NFL

EAST ATRIUM

The East Atrium acts as a dedicated entrance and provides an immersive experience from the minute your guests arrive.

Why not use the state-of-the-art LED screens to amplify your event?



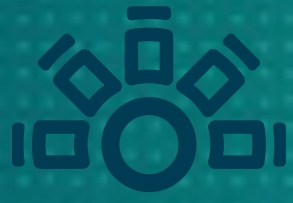
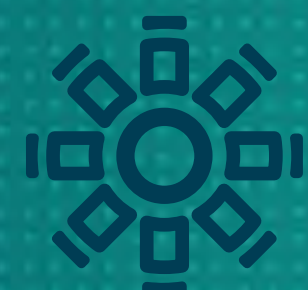

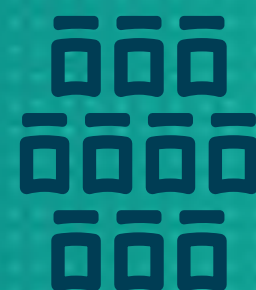


EAST QUARTER LEVEL 3

CONFERENCES

Room Features

Room Capacity

- 
400
Cabaret
- 
450
Dining
- 
1000
Reception
- 
850
Theatre

- 
Pitch View
- 
Breakout Spaces
- 
Digital Signage
- 
Complimentary Wifi
- 
Data Points
- 
Bar and Dining Facilities
- 
Vehicle Access
- 
Secure Onsite Parking Available



EAST QUARTER LEVEL 3

EXHIBITIONS

Room Capacity


1000
Exhibitions



EAST QUARTER LEVEL 3

CHRISTMAS PARTIES & CELEBRATIONS

Room Capacity



1000
Parties

EAST QUARTER LEVEL 3

PRODUCT LAUNCHES



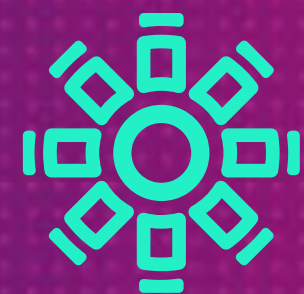
EAST QUARTER LEVEL 2

CONFERENCES

Room Capacity



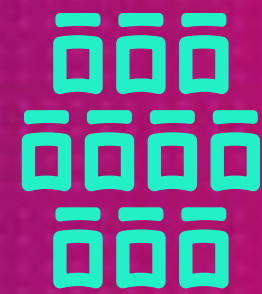
160
Cabaret



200
Dining

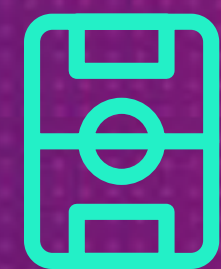


1000
Reception



250
Theatre

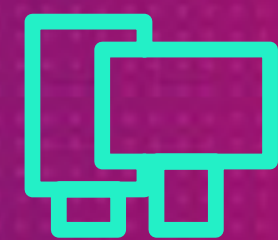
Room Features



Pitch View



Breakout Spaces



Digital Signage



Complimentary Wifi



Data Points



Bar and Dining
Facilities



Vehicle Access



Secure Onsite
Parking Available





EAST QUARTER LEVEL 2

EXHIBITIONS

Room Capacity



1000
Exhibitions



EAST QUARTER LEVEL 2

LOGES

East Quarter Level 2 includes exclusive access to our 43 stadium-facing loges, which offer an aspirational backdrop for your breakout sessions.

NFL HOME LOCKER ROOM

Experience a one-of-a-kind event at our exclusive NFL Home Locker Room. Perfect for conferences, networking events and product launches, this space offers a unique setting for up to 250 guests. Immerse yourself in the atmosphere of professional athletes whilst enjoying the exceptional amenities of our fully-equipped event space.



Room Capacity



130
Dining



250
Theatre



STRATUS

Modern, contemporary, breathtaking.
Panoramic views across the pitch and the London skyline
make this a space that leaves guests in awe.

Room Capacity



350
Reception

Room Features



Pitch View



Digital Signage



Complimentary Wifi



Data Points



Bar and Dining
Facilities



Secure Onsite
Parking Available

SUPER SUITES

Whether you're hosting a formal dinner or a roundtable, Super Suites allow you to tailor your experience for each event to exceed your guests' expectations. You'll enjoy the comfort of your spacious, private facility with outstanding catering, service and amazing pitchside

Room Capacity



20
Dining



20
Reception

Room Features



Pitch View



Digital Signage



Complimentary Wifi



Data Points



Bar and Dining
Facilities



Secure Onsite
Parking Available



THE H CLUB

With five well-defined areas that offer pitch views and a private bar, this is the Stadium's most luxurious space.

Room Features

Room Capacity



120
Dining



150
Reception



70
Theatre



Pitch View



Breakout Spaces



Digital Signage



Complimentary Wifi



Data Points



Bar and Dining
Facilities



Secure Onsite
Parking Available

THE MARKETPLACE

Home to a host of street food-inspired stalls and Europe’s longest bar, the Market Place can entertain up to 3,000 guests. This space works for a range of events thanks to its vibrant character and ability to accommodate live entertainment.

Room Capacity



3000
Reception

Room Features



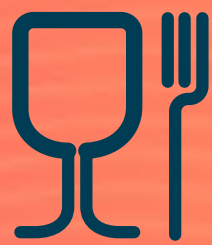
Digital Signage



Data Points



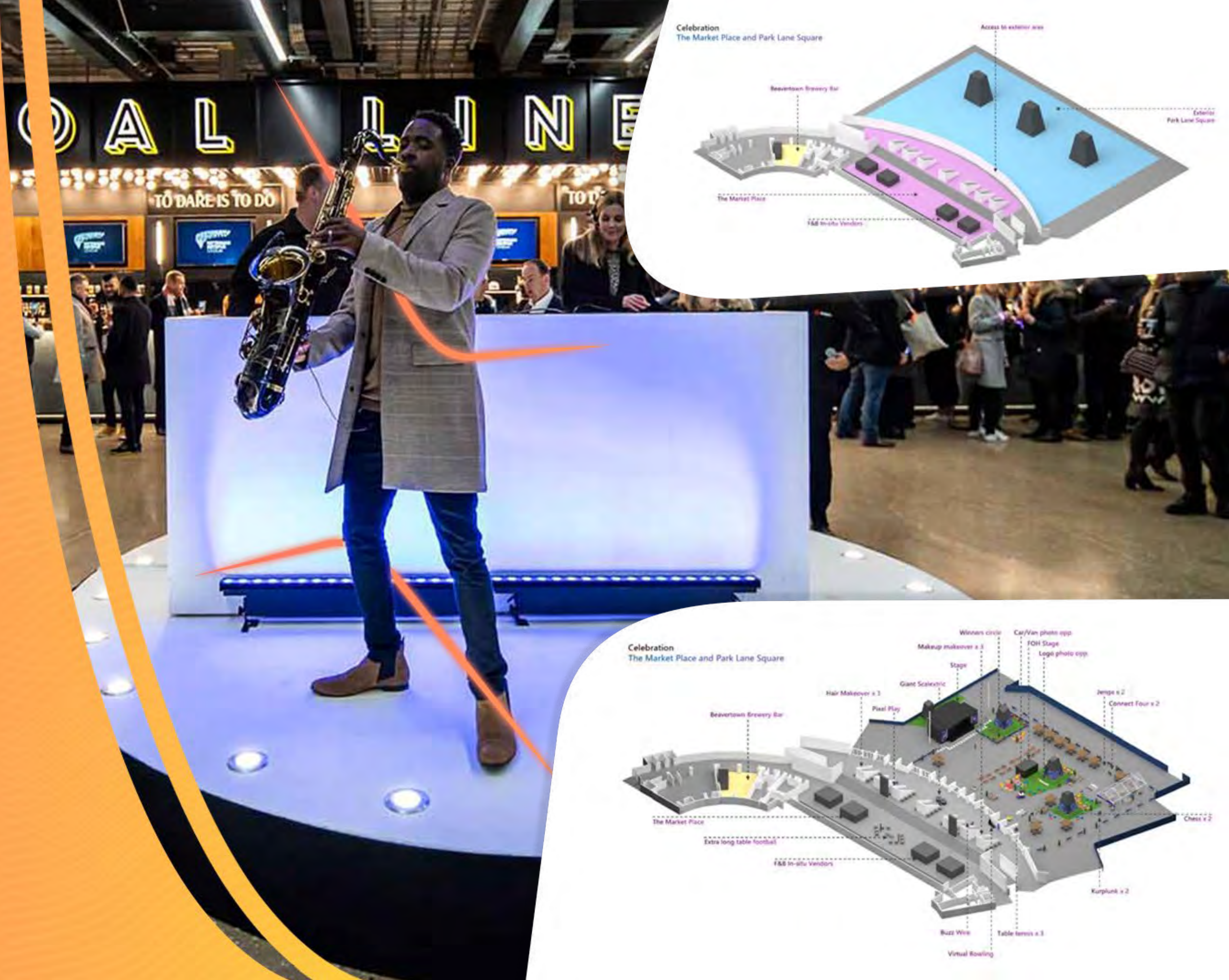
Complimentary Wifi



Bar and Dining
Facilities



Secure Onsite
Parking Available





WEDDINGS

All of our event spaces are licensed for wedding ceremonies, so why not celebrate your special day at Tottenham Hotspur Stadium? You will be provided with a dedicated wedding expert focused purely on the exceptional delivery of your day. They will guide and advise on menus, decorations, photographers and entertainment, crafting the perfect day tailored to your needs. We take the stress away from planning, leaving you free to enjoy one of the most memorable days of your life.

BAR MITZVAHS

Tottenham Hotspur Stadium has a reputation for delivering unique and beautiful occasions for parties of all sizes. Providing spectacular service, our team will make sure your special occasion is captivating and unforgettable; from the perfect room for your event, tailor made menus & sommelier advice to those little extras additions that make the day.

For Bar Mitzvahs, Bat Mitzvahs, Chuppahs or Simchas we can provide kosher catering from a select range of partners.

PLAY ON THE PITCH

Have you ever dreamed of stepping onto the same hallowed turf as your football heroes? Now's your chance to make it a reality. At our exclusive Play on the Pitch events, you can lace up your boots and experience the thrill of playing a match on the iconic pitch at Tottenham Hotspur Stadium.

Walk through the tunnel like a pro and take your place on the pitch. With professional referees, pitch-side stewards, and state-of-the-art facilities, you'll enjoy an unforgettable match. Plus, celebrate your victory (or graciously accept defeat) with post-match catering and plenty of photo ops in this world-class setting.



STATE-OF-THE-ART FACILITIES

It only makes sense that a venue as ground-breaking as Tottenham Hotspur Stadium is equipped with state-of-the-art technology throughout. Presenting you with a range of options including digital LED screens and audio-visual requirements courtesy of our onsite supplier, Eclipse, we'll work with you to amplify your brand and deliver a truly immersive delegate experience.

Unlock
Hidden
Potential

asm

TEAM BUILDING

Interactive, immersive and iconic in so many ways, Tottenham Hotspur Stadium provides the perfect setting for team-building experiences. See what goes on behind the scenes with the [Stadium Tour](#), granting you exclusive access to First Team areas and the NFL Locker Room.

On the more adventurous side? Hit new heights courtesy of [The Dare Skywalk](#). Clip in, climb up and take in spectacular views across the London skyline. Want to up the ante? [The Dare Skywalk Edge](#) – the UK's first controlled descent from a stadium – is waiting for you.

[F1 DRIVE](#) – London, the official F1 karting experience, has now opened at Tottenham Hotspur Stadium! Experience London's longest indoor track for a team day out like no other.



MAJOR EVENTS AT TOTTENHAM HOTSPUR STADIUM



FUTURE REGENERATION & HOTEL

Scheduled to complete construction in 2028, there will be 180 rooms in the new hotel, including 49 residential apartments and 64 parking spaces. It will be located on a piece of land called 'Plot 3', near the junction of the High Road and Park Lane on the south-west side of the stadium.

The hotel was originally planned to be a 22-storey building, but these plans were adjusted to 29-storeys in 2024. Architects F3, who designed significant parts of the Tottenham Hotspur Stadium and the training centre, have described the new hotel as a '4* lifestyle concept hotel'. When complete, it will be the third biggest conferencing venue in London.

Further regeneration plans for the area include 844 new homes, workspaces, shops and cafes.





FOOD & BEVERAGE

Whether it's the action on the pitch or the food we serve, daring to do things differently is a philosophy that's applied to everything at Tottenham Hotspur Stadium.

From award-winning chefs to our very own pastry kitchen, we strive to bring you the best food and drink any venue has to offer. So, whatever the event, whatever the occasion, we'll make sure you savour every dish and every moment spent here.

A man with a ponytail, wearing a white and blue Tottenham Hotspur jersey, stands with his arms crossed looking out a large window at a stadium. Two children, also in Tottenham Hotspur kits, are in the room. One child is standing near a large, textured grey pillar with a green artificial grass base. The other child is in the foreground, leaning forward. The floor has several colorful sensory toys, including a rainbow ball and some flat, colorful cards. A large yellow semi-circle is on the left, and a dark blue semi-circle is at the bottom.

THE SENSORY SUITE

The Sensory Suite is located in the stadium's North Stand. The suite offers a comfortable and calming environment for supporters on the autistic spectrum or with sensory impairment conditions to watch a match - complete with a tactile wall, a bubble tube and several other pieces of sensory equipment. Supporters have the option of watching the match both inside and outside the suite, with seating areas directly in front of the suite reserved to provide flexibility. Attendees are also presented with a sensory pack on their first visit, complete with club-branded ear defenders and several other tactile sensory toys.

THE TOTTENHAM HOTSPUR FOUNDATION

As the Club's official charitable body, the Tottenham Hotspur Foundation is committed to delivering on its vision of creating life-changing opportunities across North London.

Its programmes – spanning community and youth development, education, employment and skills, and health and wellbeing – are rooted in the Spurs heartlands of Haringey, Enfield and surrounding boroughs.

These include some of the most deprived neighbourhoods in England, with areas that face high levels of crime, poverty and unemployment, as well as significant health inequalities.

Harnessing the unique power of the iconic Tottenham Hotspur, the foundation opens doors to education, create a pathways into employment, drives healthier and happier lifestyles and builds safer, stronger communities.

In the last year, we delivered 7,400 hours of support to over 10,000 residents.



SUSTAINABILITY

Ever striving to push the boundaries of innovation, Tottenham Hotspur Stadium is one of the most technologically advanced venues in the world built with sustainability and innovation in mind.

- The Stadium utilises 100% renewable energy.
- Fully equipped with a cashless payment system.
- A zero-to-landfill waste management programme and a reusable beer cup scheme for football matches.
- Having joined the UN's Race to Zero initiative, Tottenham Hotspur Stadium is committed to halving carbon emissions by 2030 and becoming net zero carbon by 2040.

Though the Stadium is grand in design, even small finishing touches serve to inspire wonder. That's why it comes as no surprise that this multi-purpose destination continues to be the subject of acclaim, since it first opened its doors to the world.



CONTACT THE TEAM

Speak to a member of our events team today to book in for a visit of our incredible event spaces.

Tottenham Hotspur Stadium
748 High Road
London
N17 0AP

0208 365 5140
events@tottenhamhotspur.com
tottenhamhotspurstadium.com/venue-hire

White Hart Lane

(London Overground)

approx. 5 mins walk to the stadium

Northumberland Park

(Abellio Greater Anglia Services)

approx. 15 mins walk to the stadium

Tottenham Hale

(Victoria line & Abellio Greater Anglia services)

approx. 25 mins walk to the stadium

Seven Sisters

(Victoria Line & London Overground)

approx. 30 mins walk to the stadium

Bus

A number of bus routes service the stadium including 149, 259, 279 and 349

Convenient access links from

London Stansted and **London City** airports

